

TELEPHONE TYNESIDE
(0191) 2575099

FAX: (0191) 2579461

ESTABLISHED 1858

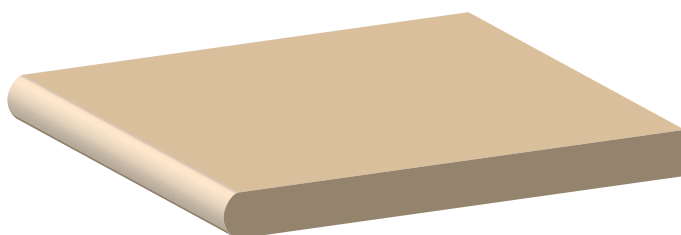


Percy A. Hudson

LIMITED

TIMBER IMPORTERS & MERCHANTS

Registered office: BOROUGH SAWMILLS · NORTHUMBERLAND ST
NORTH SHIELDS NE30 1DW

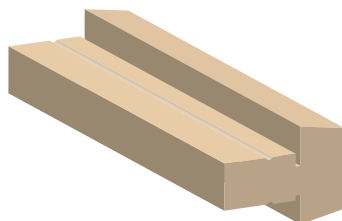


Whitewood Window Board

275 x 32mm

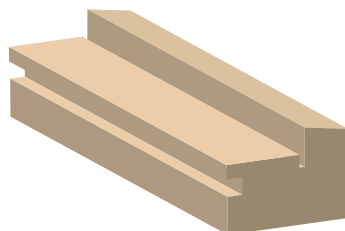
Pine Window Board

225 x 32mm



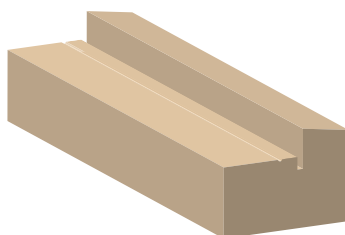
Double Glazed Mullion

87 x 63mm



Double Glazed Cill

87 x 63mm



Double Glazed Frame

87 x 63mm

Windows

All sizes are nominal.
Please note: drawings are not to scale.
If your pattern is not here we can machine timber to match your profile.

TELEPHONE TYNESIDE
(0191) 2575099

FAX: (0191) 2579461

ESTABLISHED 1858

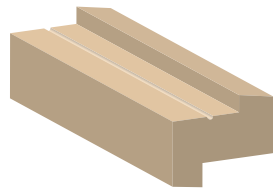


Percy A. Hudson

LIMITED

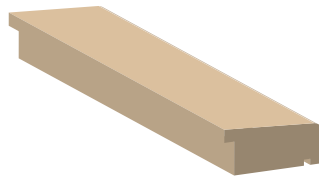
TIMBER IMPORTERS & MERCHANTS

Registered office: BOROUGH SAWMILLS · NORTHUMBERLAND ST
NORTH SHIELDS NE30 1DW



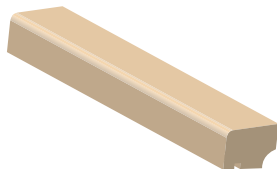
Double Glazed Sash

75 x 63mm



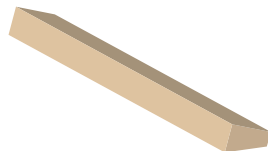
Sub Cill

75 x 38mm



Head Drip

38 x 32mm



Bevel Bead

21 x 16mm

Windows

All sizes are nominal.
Please note: drawings are not to scale.
If your pattern is not here we can machine timber to match your profile.